

MARINER'S COVE PLAT ONE

PART OF OAK CREEK, A P.U.D.

SITUATE IN SECTION 29, TWP 41S, RGE 43E,

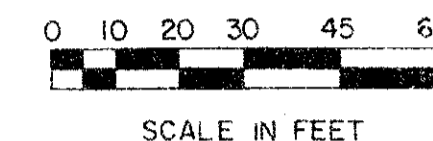
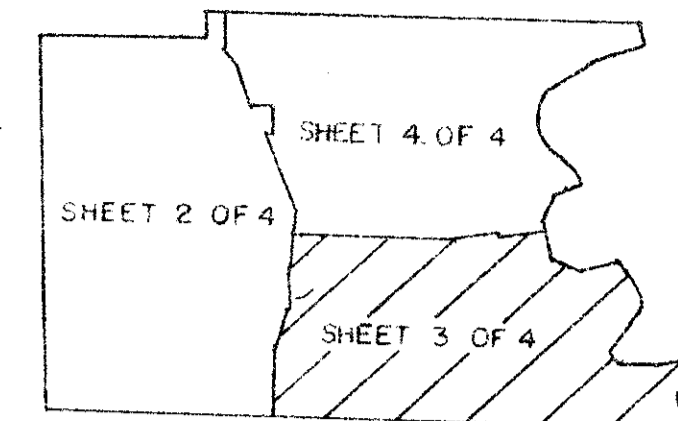
PALM BEACH COUNTY, FLORIDA

195

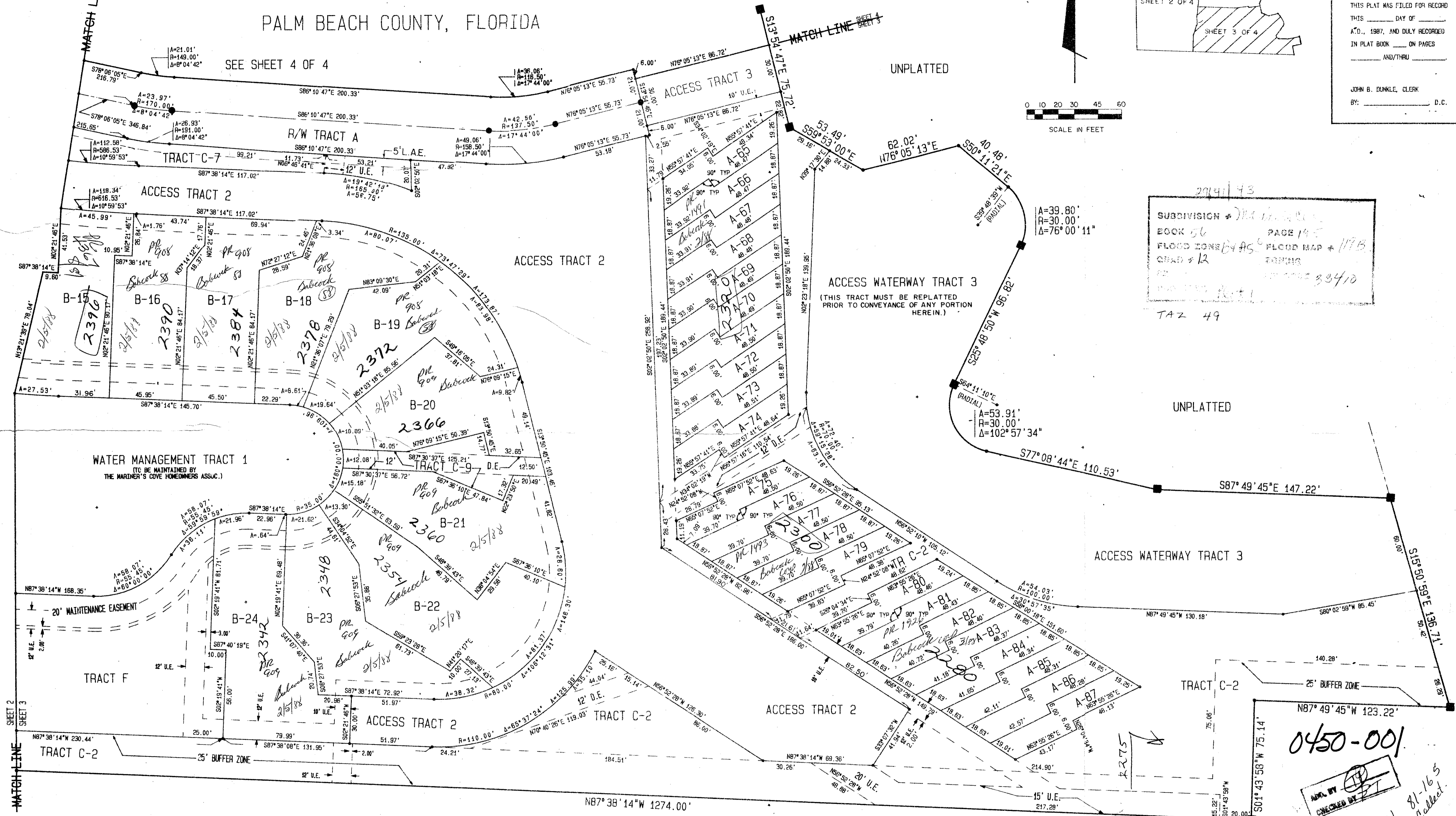
STATE OF FLORIDA
COUNTY OF PALM BEACH

THIS PLAT WAS FILED FOR RECORD
THIS _____ DAY OF _____
A.D., 1987, AND DULY RECORDED
IN PLAT BOOK _____ ON PAGES
_____ AND THRU _____

JOHN B. DUNKLE, CLERK
BY: _____ D.C.



SCALE IN FEET



2941/93
SUBDIVISION # 204
BOOK 56 PAGE 195
FLOOD ZONE 61 AS FLOOD MAP # 117B
QUAD # 12
TAX 49

0450-001

APPROVED BY [Signature]
CHECKED BY [Signature]

56/195

SHEET 3 OF 4

WINDSOR ESTATES
(PB 30, PG 72)

STANLEY / MERIDIAN SURVEYING & MAPPING, INC.		2000 LOMBARD STREET WEST PALM BEACH, FL	
DRAWN BY: W. B. H.	DATE: 02/01/87	MARINER'S COVE PLAT ONE IN SECTION 29, TOWNSHIP 41 SOUTH, RANGE 43 EAST	
CHECKED BY: HAAS	SCALE: 1"=30'		
DRAWING NO. 86-084PL1			

PLAN HOLD CORPORATION • IRVINE, CALIFORNIA
 REDLINE BY NUMBER 0754R
 PLAN HOLD CORPORATION • IRVINE, CALIFORNIA
 REDLINE BY NUMBER 0754R
 PLAN HOLD CORPORATION • IRVINE, CALIFORNIA
 REDLINE BY NUMBER 0754R